



glaze**safe**

sashmate<sup>®</sup> 



# sashmate top hung rolling bar

## **Rolling Bar Accessory**

(For use with the Sashmate Top Hung)

Visit [www.glazesafe.com](http://www.glazesafe.com) to view the Sashmate demo films online. An Aide Memoire is also available as a free download on the demo and specifications pages of the website.

The Rolling Bar has been designed to further assist the job of sash removal for window repairs.

It is used instead of the safety strap and offers complete stabilisation of two independent Sashmate Top Hung bracing arms.

The Rolling Bar also provides a means of rolling the sash into the building instead of carrying it in, making the job easier and safer.

## **PROCEDURE**

As with all the Sashmate tools and accessories always check the condition of all components, including welds before use.

1. Firstly remove the two sledges from the bracing arms and sleeves.
2. Carry out the normal procedure of fitting the Sashmate into position but leave the bracing arms and sleeves at their lowest point, sitting on the bottom clamp. Ensure that both are facing directly out and are parallel to each other.
3. Slide the two sledges through the box sections of the Rolling Bar. Ensure that the box sections are above the cylindrical parts of the Rolling Bar. See Fig 1.
4. Hold the two sledges and feed out of the window, dip the angled welds underneath the sash if necessary. Slide both sledges into the bracing arms and sleeves.
5. Complete the fitting procedure by lifting the bracing arms and sleeves to meet the bottom of the sash.
6. Check that the Rolling Bar rolls and then re-check all thumb screws and components.
7. Once the standard procedure of removing hinge fixings is complete and the sash is ready to be brought in, cover the Transom bar/outer frame with sufficient protection to prevent damage when rolling the sash in.
8. Brace the sash and turn until it rests on the Rolling Bar then roll into the building, do this slowly continuously checking that you have the sash supported.
9. Once repairs are carried out to the sash, reverse the procedure to get the sash on to the sledges.

## **BREAKDOWN**

1. Make sure all the screws/pop rivets have been replaced correctly.
2. Unscrew and release the two sledges then feed the sledges out of the bracing arms and sleeves. Carry in the Rolling Bar and the two sledges.
3. Unscrew the sleeve for pin and move to the centre of the main rod tube. Unscrew the pin, house and tighten up screw.
4. Unscrew the bracing arm sleeve and the sledge screws. Swing the whole arm round if necessary then tighten up the sledge screw. Drop the bracing arm sleeve onto the bottom clamp and tighten screw.
5. Hold the main rod tube and with the other hand unscrew the top clamp, drop slightly so that the top clamp is away from the frame and tighten back up.
6. Remove the tool. Then carry out the same procedure for the other tool. Make sure all screws are tight.

## **LIMITATIONS**

The Sashmate® Top Hung STEEL Rolling Bar is capable of supporting a sash that is 40kg in weight. Exceeding these limits may be dangerous and could cause injury or damage!

The standard bars supplied as part of the Rolling Bar accessory can be used on a window up to 900mm in width. Extra bars can be ordered for wider sashes.

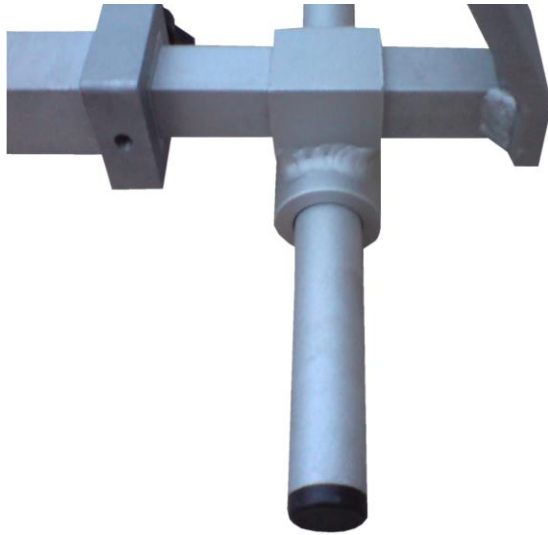
It is not advisable to use either the Sashmate® or the Sashmate® Side Hung in bad weather conditions.

On occasion you may find that the top hung window you are working on may have been fitted using oversized friction stays or friction stays that have early 'stops' creating a restricted opening.

This can sometimes mean that the bottom of the sash does not raise sufficiently when fully opened to sit on the Sashmate® horizontal arms. The Sashmate® Top Hung Drop Set can be used to overcome this problem.

3/4

Fig 1. Rolling Bar fitted to bracing arm and sleeve



Sashmate Top Hung and Rolling Bar fitted into double glazed window



## **CONTACT DETAILS**

**Glazesafe Limited  
1 Turnford Villas, Highroad Turnford,  
Broxbourne, Hertfordshire.  
EN10 6BE.  
Tel/Fax 01992 302 133  
[info@glazesafe.com](mailto:info@glazesafe.com)**

For any further orders or any questions or queries please  
contact Glazesafe Ltd by any of the above means.

Sashmate is a Registered Trademark. Sashmate is  
Protected by Patent in a number of territories.

© Glazesafe Ltd 2010-2014